

**This electronic collection of documents is provided
for the convenience of the user
and is Not a Certified Document –**

**The documents contained herein were originally issued
and sealed by the individuals whose names and license
numbers appear on each page, on the dates appearing
with their signature on that page.**

**This file or an individual page
shall not be considered a certified document.**

STATE OF NORTH CAROLINA
DIVISION OF HIGHWAYS

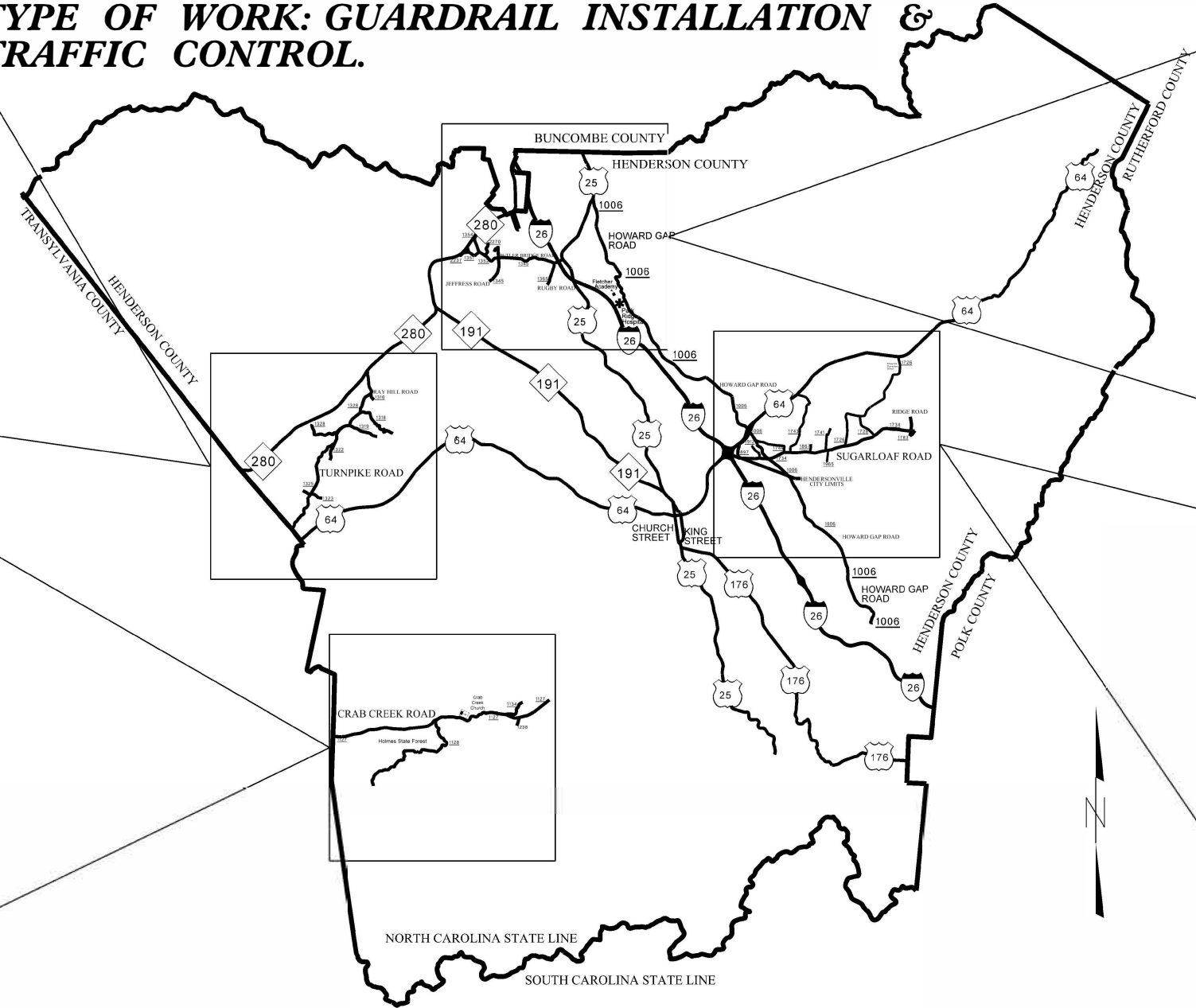
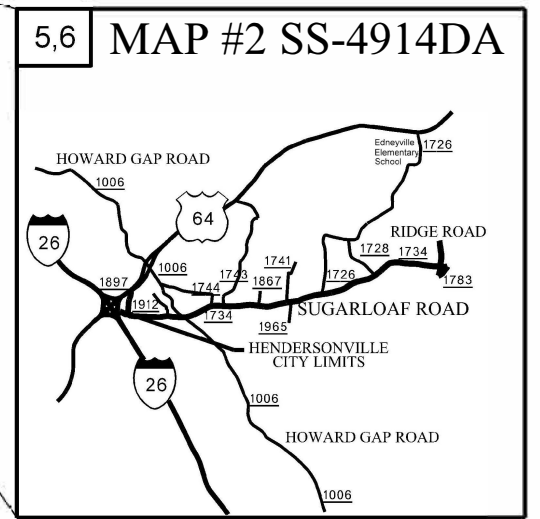
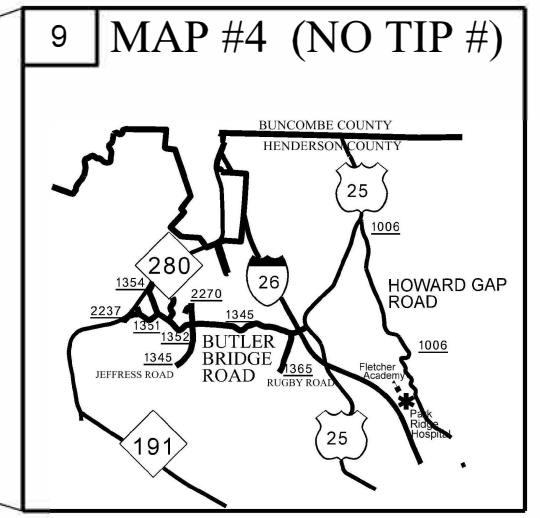
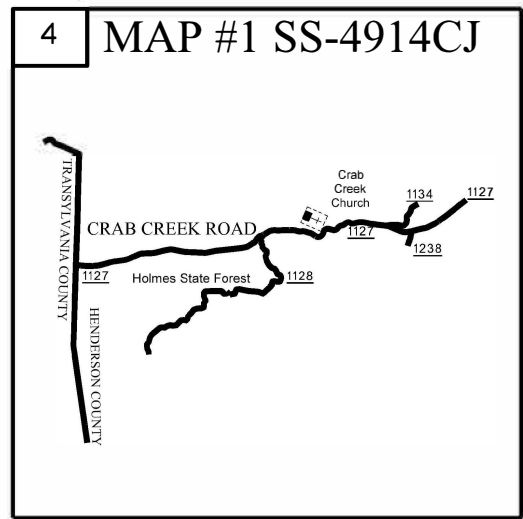
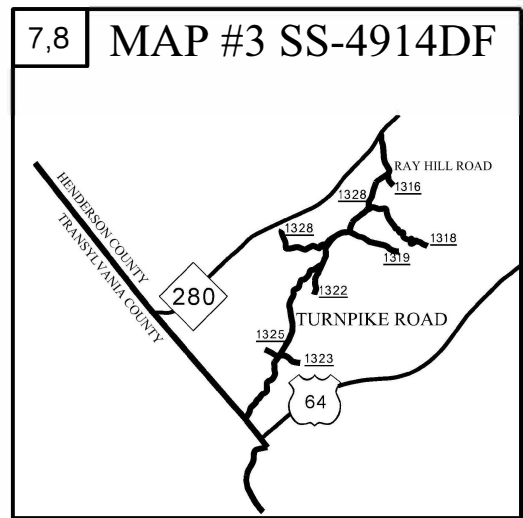
HENDERSON COUNTY

LOCATION: VARIOUS LOCATIONS WITHIN HENDERSON COUNTY

TYPE OF WORK: GUARDRAIL INSTALLATION & TRAFFIC CONTROL.

STATE	STATE PROJECT REFERENCE NO.	SHEET NO.	TOTAL SHEETS
N.C.	SS-4914CJ SS-4914DA SS-4914DF	1	10
STATE PROJ. NO.	F.A. PROJ. NO.	DESCRIPTION	
44730.3.1		CONSTRUCTION	
47339.3.1		CONSTRUCTION	
47477.3.1		CONSTRUCTION	
36249.4299		CONSTRUCTION	

CONTRACT: DN00754 TIP PROJECT: SS-4914CJ / SS-4914DA / SS-4914DF



GRAPHIC SCALES

NOTE:
"PLANS"
ARE NOT
TO SCALE

DESIGN DATA
MAP #1 CRAB CREEK RD
ADT=3800
V=40 MPH
MAP #2 SUGARLOAF RD
ADT=7200
V=45 MPH
MAP #3 TURNPIKE RD
ADT=3000
V=35 MPH
MAP #4 BUTLER BRIDGE RD
ADT=1800
V=35 MPH

PROJECT LENGTH
MAP #1 SS-4914CJ = 0.10 MILES
MAP #2 SS-4914DA = 4.50 MILES
MAP #3 SS-4914DF = 1.62 MILES
MAP #4 (NO TIP #) = 0.12 MILES

Prepared in the Office of:
DIVISION OF HIGHWAYS
1000 Birch Ridge Dr., Raleigh NC, 27610

2018 STANDARD SPECIFICATIONS

RIGHT OF WAY DATE:
N/A

LETTING DATE:
June 8, 2021

L.R. Watkins, PE
PROJECT ENGINEER

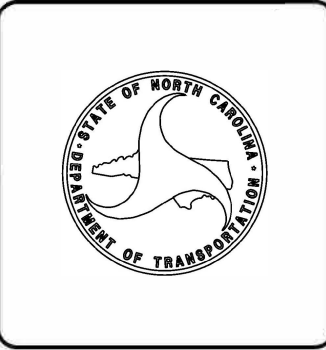
DocuSigned by:
R.H. Darvell
PROJECT DESIGN ENGINEER
E3DD5A4810424B2...

HYDRAULICS ENGINEER

SIGNATURE: N/A

ROADWAY DESIGN ENGINEER

SIGNATURE: N/A



05/17/2021

INDEX OF SHEETS

SHEET NUMBER: SHEET:

1	TITLE SHEET
1A	INDEX OF SHEETS, GENERAL NOTES, NOTE TO CONTRACTOR AND LIST OF STANDARDS
1B	CONVENTIONAL SYMBOLS
2B	ROADWAY DETAILS
3B-1	GUARDRAIL SUMMARY SHEET
4	MAP #1 SITE LOCATIONS
5	MAP #2 SITE LOCATIONS
6	MAP #2 SITE LOCATIONS (CONTINUED)
7	MAP #3 SITE LOCATIONS
8	MAP #3 SITE LOCATIONS (CONTINUED)
9	MAP #4 SITE LOCATIONS

GENERAL NOTES:

THE GUARDRAIL LOCATIONS SHOWN ON THESE PLANS MAY BE ADJUSTED DURING THE CONSTRUCTION AS DIRECTED BY THE ENGINEER. THE CONTRACTOR SHOULD CONSULT WITH THE ENGINEER PRIOR TO ORDERING GURADRAIL MATERIAL.

NO SUBSURFACE PLANS ARE AVAILABLE ON THIS PROJECT. THE CONTRACTOR SHOULD MAKE HIS OWN INVESTIGATION AS TO THE SUBSURFACE CONDITIONS.

APPROXIMATE LOCATION FOR EACH OF THE GUARDRAIL SITES LISTED IN THESE PLANS HAVE BEEN IDENTIFIED AND MARKED IN THE FIELD PRIOR TO THE LET OF THIS CONTRACT.

THERE SHALL BE NO DEVIATIONS FROM THE STANDARD DRAWINGS WITHOUT PRIOR APPROVAL FROM THE ENGINNER.

ALL TRAFFIC CONTROL DESIGN, PLACEMENT, OPERATION, MAINTENANCE, AND UNIFORMITY SHALL BE IN ACCORDANCE WITH THE MOST CURRENT PRACTICES DETAILED IN THE 2018 ROADWAY STANDARD DRAWINGS.

NOTE TO CONTRACTOR:

ALL NEW INSTALLATION OR REPLACEMENT OF GUARDRAIL AND MATERIALS ON THIS PROJECT SHALL BE FROM THE NuGuard-31 STRONG POST GUARDRAIL SYSTEM OR APPROVED EQUIVALENT. ALL END UNITS AND BRIDGE ATTACHMENTS FOR THESE SITES SHALL BE 31" MASH EQUIVALENT PRODUCTS.

UTILITY OWNERS ON THIS PROJECT ARE:

- AT&T TELEPHONE COMPANY (828-553-9599)
- PSNC ENERGY (877-776-2427)
- DUKE ENERGY (800-769-3766)
- MORRIS BROADBAND (828-692-3278)
- CITY OF HENDERSONVILLE (828-697-3073)

ANY RELOCATION OF EXISTING UTILITIES WILL BE ACCOMPLISHED BY OTHERS.

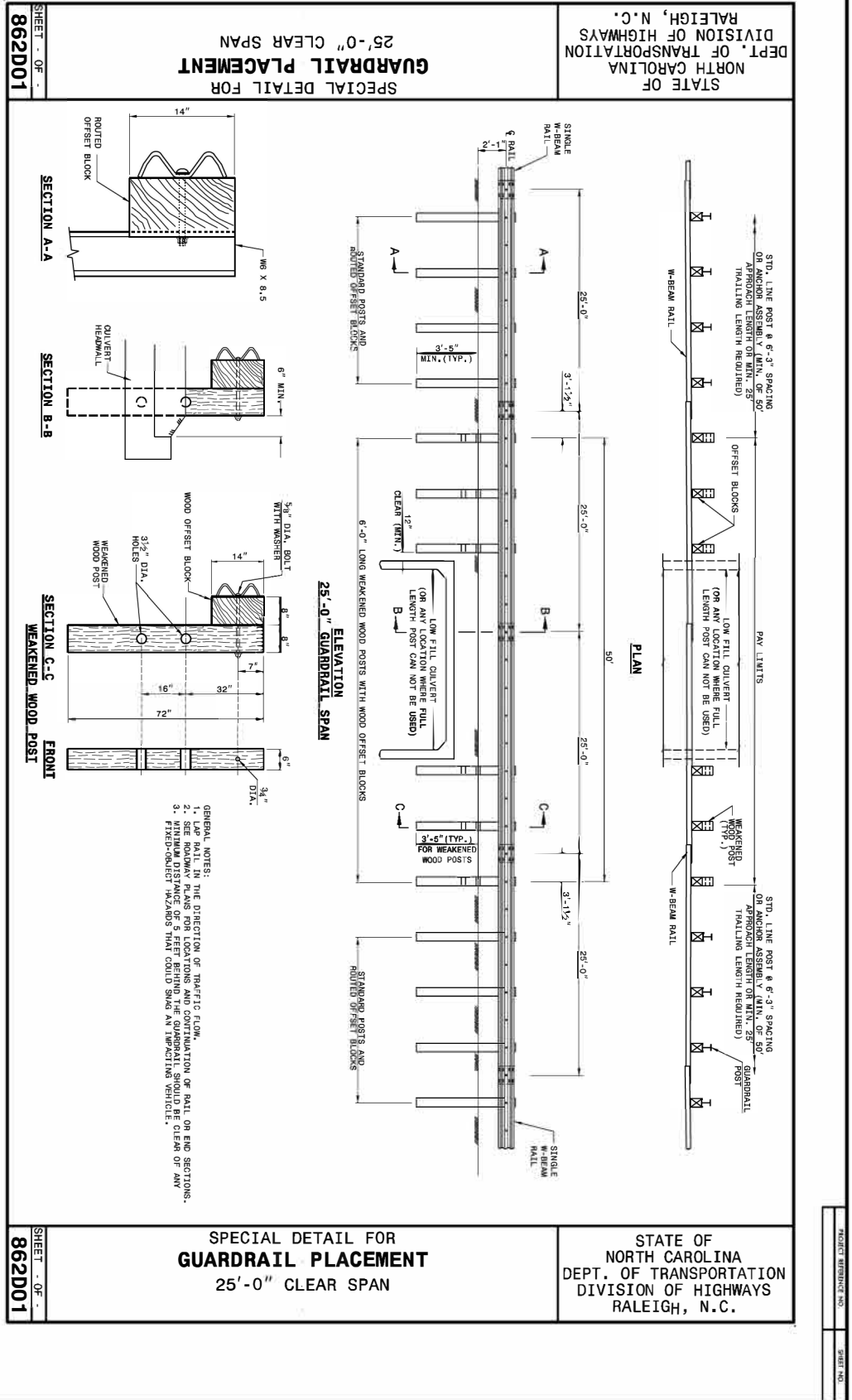
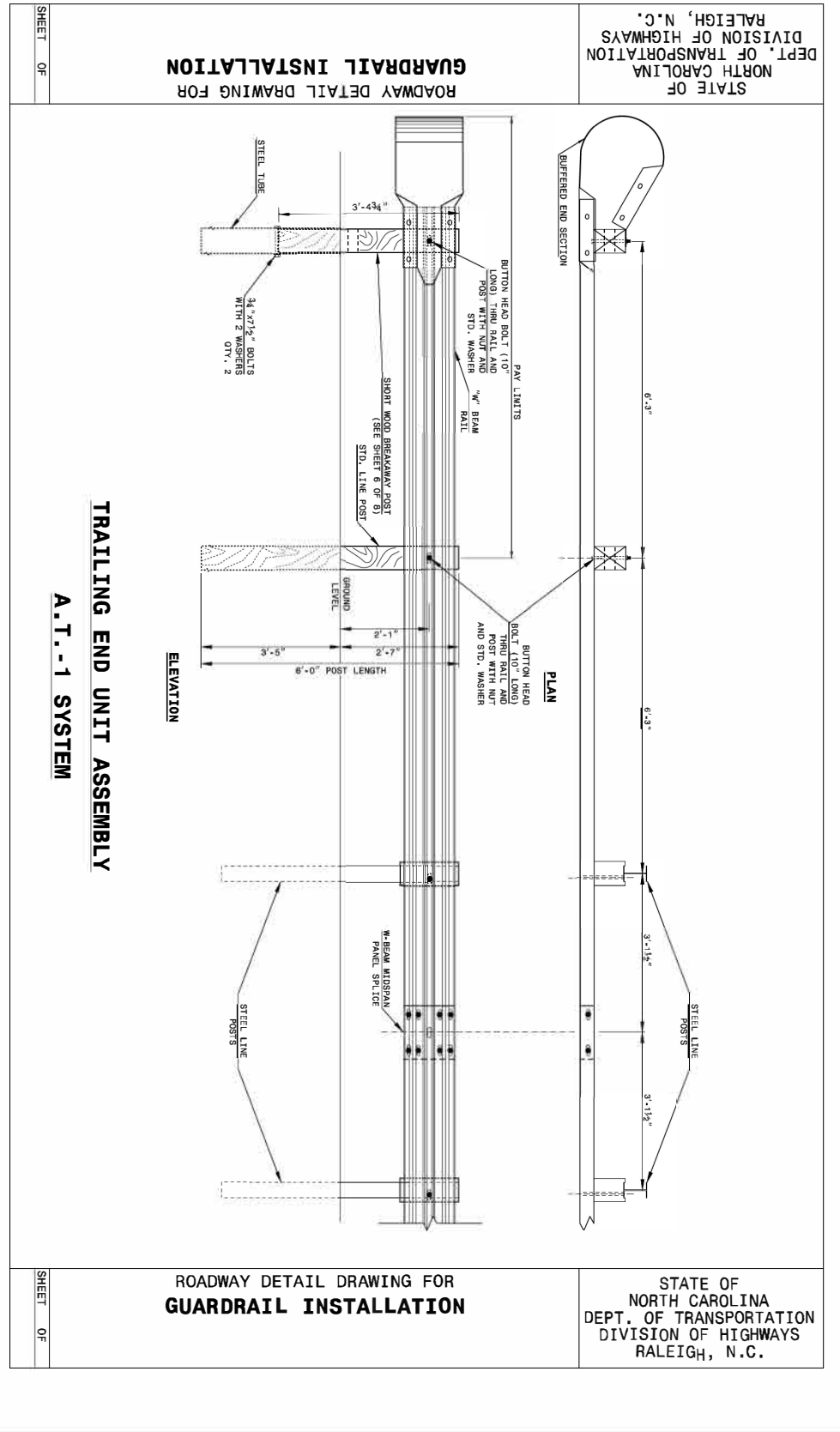
2018 ROADWAY ENGLISH STANDARD DRAWINGS

EFF. 01-2018

The following Roadway Standards as appear in "Roadway Standard Drawings" Highway Design Branch - N. C. Department of Transportation - Raleigh, N. C., Dated January, 2018 are applicable to this project and by reference hereby are considered a part of these plans:

DIVISION 8 - INCIDENTALS

STD.NO.	TITLE
862.01	Guardrail Placement
862.02	Guardrail Installation



CONTRACTS STANDARDS
 AND DEVELOPMENT UNIT
 OFFICE 919-707-6950 FAX 919-250-4119

**25'-0" CLEAR SPAN
 GUARDRAIL PLACEMENT**

DATE: _____
 CHECKED BY: _____
 FILE NO.:

DATE: _____
 CHECKED BY: _____
 FILE NO.:

SHEET . OF .
862D01

SHEET . OF .
862D01

STATE OF NORTH CAROLINA, DIVISION OF HIGHWAYS CONVENTIONAL PLAN SHEET SYMBOLS

BOUNDARIES AND PROPERTY:

State Line	
County Line	
Township Line	
City Line	
Reservation Line	
Property Line	
Existing Iron Pin	
Computed Property Corner	
Property Monument	
Parcel/Sequence Number	
Existing Fence Line	
Proposed Woven Wire Fence	
Proposed Chain Link Fence	
Proposed Barbed Wire Fence	
Existing Wetland Boundary	
Proposed Wetland Boundary	
Existing Endangered Animal Boundary	
Existing Endangered Plant Boundary	
Existing Historic Property Boundary	
Known Contamination Area: Soil	
Potential Contamination Area: Soil	
Known Contamination Area: Water	
Potential Contamination Area: Water	
Contaminated Site: Known or Potential	

BUILDINGS AND OTHER CULTURE:

Gas Pump Vent or U/G Tank Cap	
Sign	
Well	
Small Mine	
Foundation	
Area Outline	
Cemetery	
Building	
School	
Church	
Dam	

HYDROLOGY:

Stream or Body of Water	
Hydro, Pool or Reservoir	
Jurisdictional Stream	
Buffer Zone 1	
Buffer Zone 2	
Flow Arrow	
Disappearing Stream	
Spring	
Wetland	
Proposed Lateral, Tail, Head Ditch	
False Sump	

RAILROADS:

Standard Gauge	
RR Signal Milepost	
Switch	
RR Abandoned	
RR Dismantled	

Note: Not to Scale

**S.U.E. = Subsurface Utility Engineering*

RIGHT OF WAY & PROJECT CONTROL:

Secondary Horiz and Vert Control Point	
Primary Horiz Control Point	
Primary Horiz and Vert Control Point	
Exist Permanent Easement Pin and Cap	
New Permanent Easement Pin and Cap	
Vertical Benchmark	
Existing Right of Way Marker	
Existing Right of Way Line	
New Right of Way Line	
New Right of Way Line with Pin and Cap	
New Right of Way Line with Concrete or Granite R/W Marker	
New Control of Access Line with Concrete C/A Marker	
Existing Control of Access	
New Control of Access	
Existing Easement Line	
New Temporary Construction Easement	
New Temporary Drainage Easement	
New Permanent Drainage Easement	
New Permanent Drainage / Utility Easement	
New Permanent Utility Easement	
New Temporary Utility Easement	
New Aerial Utility Easement	

ROADS AND RELATED FEATURES:

Existing Edge of Pavement	
Existing Curb	
Proposed Slope Stakes Cut	
Proposed Slope Stakes Fill	
Proposed Curb Ramp	
Existing Metal Guardrail	
Proposed Guardrail	
Existing Cable Guiderail	
Proposed Cable Guiderail	
Equality Symbol	
Pavement Removal	

VEGETATION:

Single Tree	
Single Shrub	

Hedge	
Woods Line	
Orchard	
Vineyard	

EXISTING STRUCTURES:

MAJOR:	
Bridge, Tunnel or Box Culvert	
Bridge Wing Wall, Head Wall and End Wall	
MINOR:	
Head and End Wall	
Pipe Culvert	
Footbridge	
Drainage Box: Catch Basin, DI or JB	
Paved Ditch Gutter	
Storm Sewer Manhole	
Storm Sewer	

UTILITIES:

POWER:	
Existing Power Pole	
Proposed Power Pole	
Existing Joint Use Pole	
Proposed Joint Use Pole	
Power Manhole	
Power Line Tower	
Power Transformer	
U/G Power Cable Hand Hole	
H-Frame Pole	
U/G Power Line LOS B (S.U.E.*)	
U/G Power Line LOS C (S.U.E.*)	
U/G Power Line LOS D (S.U.E.*)	

TELEPHONE:

Existing Telephone Pole	
Proposed Telephone Pole	
Telephone Manhole	
Telephone Pedestal	
Telephone Cell Tower	
U/G Telephone Cable Hand Hole	
U/G Telephone Cable LOS B (S.U.E.*)	
U/G Telephone Cable LOS C (S.U.E.*)	
U/G Telephone Cable LOS D (S.U.E.*)	
U/G Telephone Conduit LOS B (S.U.E.*)	
U/G Telephone Conduit LOS C (S.U.E.*)	
U/G Telephone Conduit LOS D (S.U.E.*)	
U/G Fiber Optics Cable LOS B (S.U.E.*)	
U/G Fiber Optics Cable LOS C (S.U.E.*)	
U/G Fiber Optics Cable LOS D (S.U.E.*)	

WATER:

Water Manhole	
Water Meter	
Water Valve	
Water Hydrant	
U/G Water Line LOS B (S.U.E.*)	
U/G Water Line LOS C (S.U.E.*)	
U/G Water Line LOS D (S.U.E.*)	
Above Ground Water Line	

TV:

TV Pedestal	
TV Tower	
U/G TV Cable Hand Hole	
U/G TV Cable LOS B (S.U.E.*)	
U/G TV Cable LOS C (S.U.E.*)	
U/G TV Cable LOS D (S.U.E.*)	
U/G Fiber Optic Cable LOS B (S.U.E.*)	
U/G Fiber Optic Cable LOS C (S.U.E.*)	
U/G Fiber Optic Cable LOS D (S.U.E.*)	

GAS:

Gas Valve	
Gas Meter	
U/G Gas Line LOS B (S.U.E.*)	
U/G Gas Line LOS C (S.U.E.*)	
U/G Gas Line LOS D (S.U.E.*)	
Above Ground Gas Line	

SANITARY SEWER:

Sanitary Sewer Manhole	
Sanitary Sewer Cleanout	
U/G Sanitary Sewer Line	
Above Ground Sanitary Sewer	
SS Forced Main Line LOS B (S.U.E.*)	
SS Forced Main Line LOS C (S.U.E.*)	
SS Forced Main Line LOS D (S.U.E.*)	

MISCELLANEOUS:

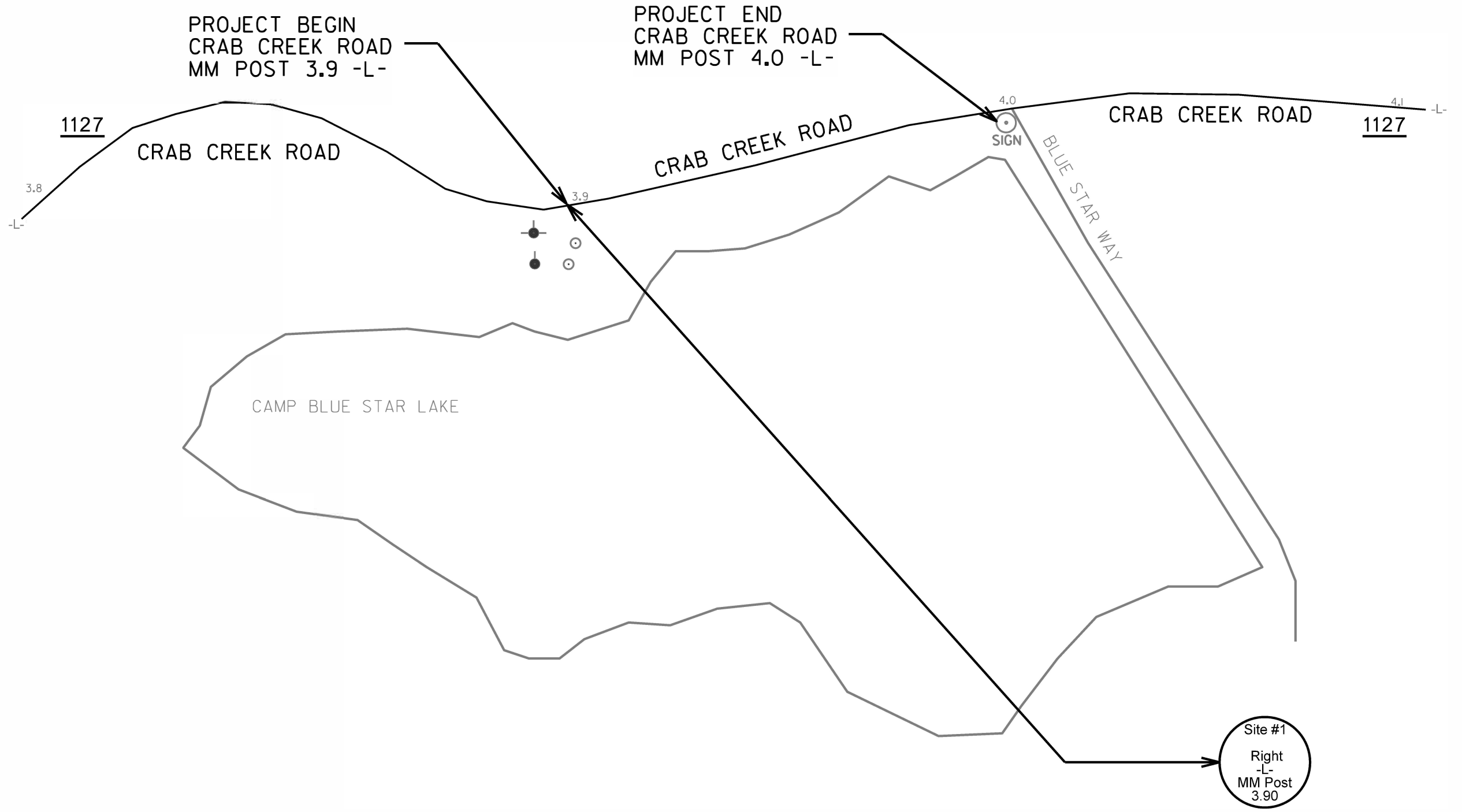
Utility Pole	
Utility Pole with Base	
Utility Located Object	
Utility Traffic Signal Box	
Utility Unknown U/G Line LOS B (S.U.E.*)	
U/G Tank; Water, Gas, Oil	
Underground Storage Tank, Approx. Loc.	
A/G Tank; Water, Gas, Oil	
Geoenvironmental Boring	
U/G Test Hole LOS A (S.U.E.*)	
Abandoned According to Utility Records	
End of Information	

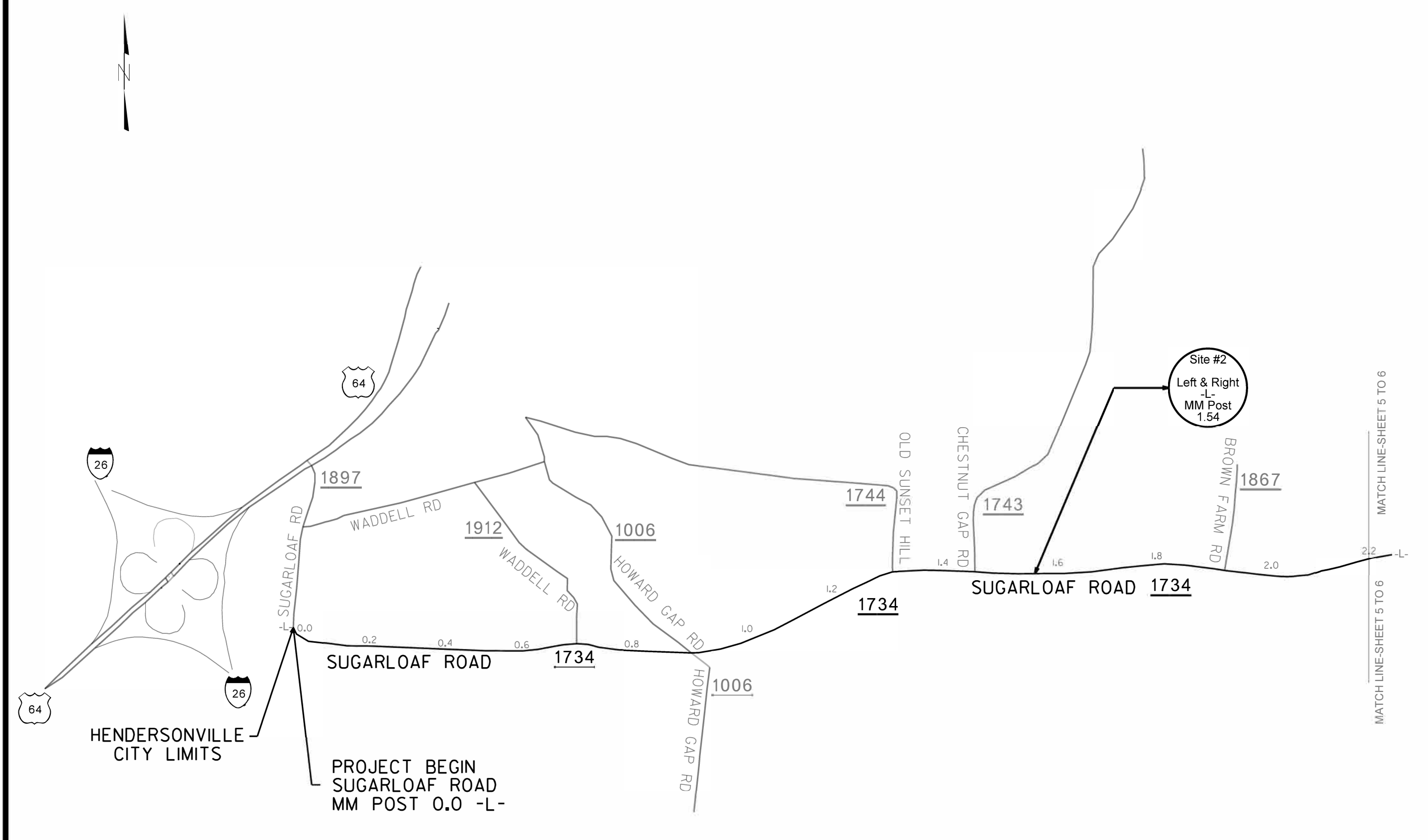


*NOTE:
BEGIN GUARDRAIL PROJECT WITH
TL-3 END UNIT PERPENDICULAR
BETWEEN GUY WIRE STAKE AND
EDGE OF PAVEMENT.

*NOTE:
END GUARDRAIL PROJECT UTILIZING
12.5' SHOP CURVE AND AT-1 END UNIT
TO BE LOCATED BEHIND CAMP BLUE STAR
ENTRANCE SIGN SO THAT EXISTING SIGHT
DISTANCE IS NOT AFFECTED.

MOUNTAIN
VIEW
ESTATE





Map #2 (WBS:47339.3.1)

